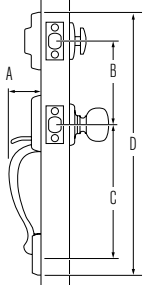
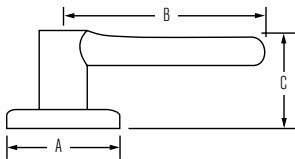


## HANDLESETS



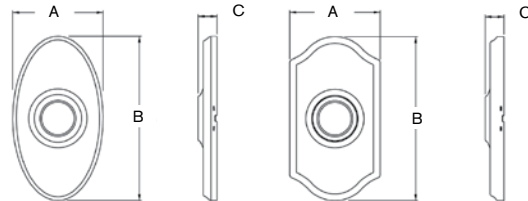
Design	A	B	C	D
Amherst	3"	5-1/2"	8-13/32"	18-23/32"
Ashfield	2-21/32"	5-1/2"	8-13/32"	17-3/4"
Avalon	2-21/32"	5-1/2"	8-13/32"	18-5/32"
Hawthorne	2-7/8"	5-1/2"	8-13/32"	17-9/16"
Shelburne	2-7/8"	5-1/2"	8-13/32"	18-1/4"
Bingsley	3"	5-1/2"	8-7/16"	17-7/8"
Grayson	3-1/16"	5-1/2"	8-3/8"	17-13/16"
Whistler	3-3/8"	5-1/2"	8-3/8"	18-1/2"
Davenport	3-1/16"	5-1/2"	8-3/8"	18-5/16"
Monaco	3"	5-1/2"	8-3/8"	18-11/16"
Longbourn	3-1/16"	5-1/2"	8-3/8"	18-1/2"
Pemberly	3-1/8"	5-1/2"	8-7/16"	17-3/8"

## LEVERS



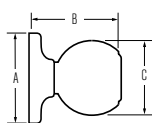
Design	A	B	C	C (Keyed)
Ashfield	2-5/8"	4-3/16"	2-9/16"	2-7/8"
Avalon	2-5/8"	4-1/4"	2-1/2"	2-7/8"
Brooklane	2-5/8"	4-3/16"	2-3/16"	2-7/8"
Commonwealth	2-5/8"	3-5/8"	1-15/16"	2-11/16"
Trapani	2-13/16"	4-3/16"	2-3/4"	2-3/4"
Maya	2-13/16"	4-1/4"	2-9/16"	2-3/4"

## DESIGNER ROSE



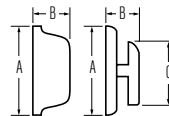
Design	A	B	C
Oval	2-23/32"	4-7/8"	9/16"
Arched	2-23/32"	4-7/8"	9/16"

## KNOBS



Design	A	B	C
Hancock	2-5/8"	2-3/4"	2-3/8"
Wickham	2-13/16"	2-7/16"	2-3/8"
Brixton	2-13/16"	2-7/16"	2-9/16"

## DEADBOLT



Design	A	B	C
9471 Interior	2-9/16"	1-5/32"	1-13/16"
9471 Exterior	2-5/8"	1-1/16"	
9371 Interior	2-5/8"	1-1/16"	
9371 Exterior	2-5/8"	1-1/16"	
9571 Interior	2-9/16"	1-5/32"	1-13/16"
9571 Exterior	3"	1-5/8"	