

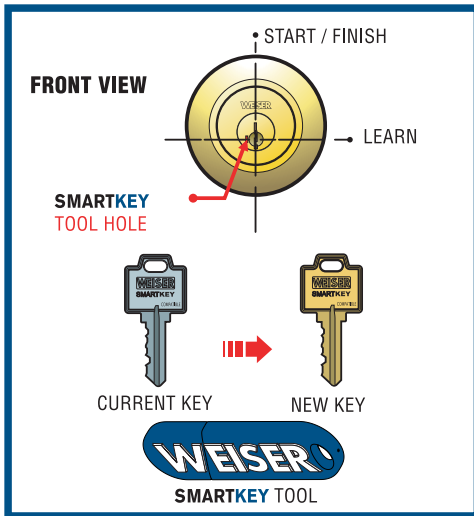
BEFORE YOU START...

These steps show you how to change from the current key that operates the lock to a new key you want to operate the lock. For new purchases, the current key is the one that was supplied with the lockset.

Be sure to install the product on the door first, prior to rekeying.

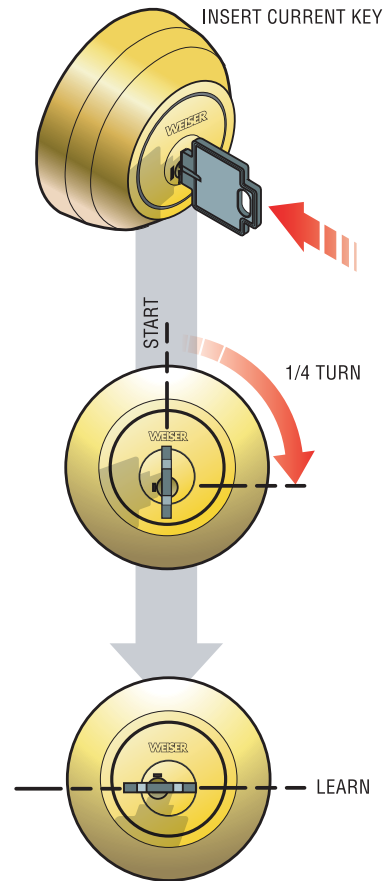
These instructions illustrate a deadbolt for demonstration purposes, but these SmartKey rekeying instructions also apply to keyed knobs, levers, and handlesets.

DEFINITIONS

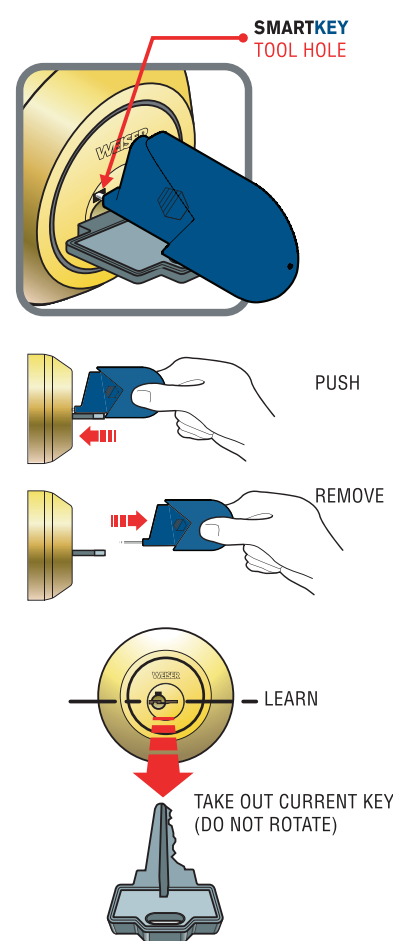


www.weiserlock.com

STEP 1 TURN TO LEARN POSITION



STEP 2 INSERT AND REMOVE SMART KEY TOOL



STEP 3 LEARN NEW KEY

